

ACCESS TO FILE ATTACHMENTS

In addition to accessing part information, you can also view technical files that have been linked to your equipment. Some of the types of files that can be accessed include: Microsoft Excel, Word, PowerPoint, Adobe PDF, CAD drawings, and more.

WORK ORDERS AND CHECKLISTS

Manage work orders with work order types, status, and priority levels that you define.

Receive e-mail notifications automatically when new work orders are created.

Lookup or create reports that track:

- dates and times (estimated, actual, and downtime)
- description, root cause, and corrective action
- labor and parts cost
- personnel (requested by, performed by, and more)
- work order type, priority level, and status

Create custom checklists that include options for:

- type (maintenance or operator)
- frequency (days, weeks, months)

Checklists can automatically create work orders for equipment that have been marked as requiring additional attention.

EASY TO ADMINISTER

Using Assembly Manager, you can easily manage or perform the following:

- define the navigation paths to your equipment
- assign photos and technical documents to your equipment
- assign part information for your equipment
- drag and drop hotspots into position
- generate reports and charts
- and much more

ADDITIONAL USES

OEMs can add value to their customers by providing Assembly Vision with their products to their customers.

Sales departments can catalog their product line to access and provide technical information.

TRY ASSEMBLY VISION FREE FOR 45 DAYS

View a software tour or download the installation file from:

www.AssemblyVision.com



Assembly Vision, LLC
4650 W. Spencer Street
Appleton, WI 54914

(800) 305-2565 toll free
(920) 968-4650 fax
sales@assemblyvision.com
www.assemblyvision.com

Assembly Viewer and Assembly Manager are trademarks of Assembly Vision, LLC. All other trademarks belong to their respective holders.

11/08

Could Assembly Vision be the missing puzzle piece in your organization?



Reduce costs and increase productivity with a system that is uncommonly easy to use.

- **Access** replacement part information
- **Manage** work orders and preventative maintenance checklists
- **Share** technical files between departments:
 - Maintenance
 - Engineering
 - Safety
 - Operations
 - Purchasing
 - Quality



ABOUT ASSEMBLY VISION SOFTWARE

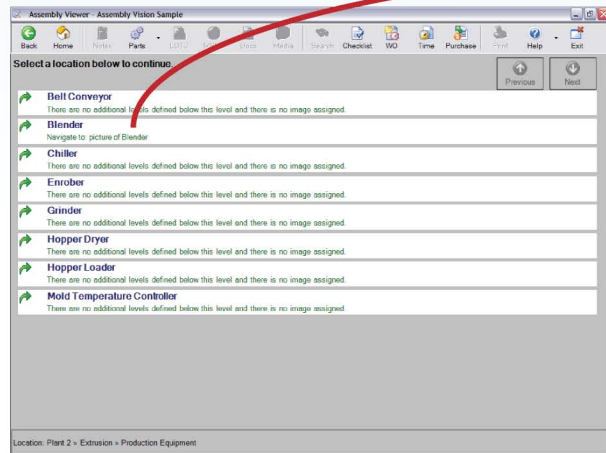
Assembly Vision provides a way for you to create custom visual navigation for locating your technical equipment information. The software can be configured to match any business or operation structure.

Assembly Vision can provide access to many types of equipment information. Significantly reduce your time spent locating:

- replacement parts information
- CAD drawings
- installation instructions
- work order and checklist history
- MSDS and Lockout/Tagout documents
- quality control documents
- ISO documents
- and more

VISUAL DATABASE NAVIGATION

The equipment navigation process includes pictures of your actual equipment and the software can function as a touchscreen program.



Using the Assembly Viewer module, navigate through your company's areas and equipment by simply clicking on area descriptions or image hotspots.

IMAGINE HOW MUCH MORE A SYSTEM IS USED WHEN IT IS THIS EASY!

EASY AND FAST ACCESS TO SO MANY DIFFERENT TYPES OF INFORMATION

The screenshot shows the 'Assembly Viewer - Assembly Vision Sample' window. The toolbar includes icons for Back, Home, Notes, Parts, LOTO, MSDS, Docs, Media, Search, Checklist, WO, Time, Purchase, Print, Help, and Exit. The main area displays a large image of industrial equipment with several yellow circles highlighting hotspots. Red callout lines point from these hotspots to various information sources:

- MSDS files
- Lockout / Tagout files
- Replacement part information
- Access technical files in various formats, including: Excel, Word, PDF, DWG, and more
- View multimedia files (i.e. tutorial movies)
- Search for specific parts on other equipment
- PM checklists
- Work orders
- Record and analyze time

 The text 'Select a hotspot on the image to continue.' is displayed above the image. At the bottom, the location is indicated as 'Location: Plant 2 » Extrusion » Production Equipment » Blender'.

Retrieve information you need fast (i.e. serial numbers, warranty information, etc.)

Click on hotspots to navigate to more detailed photos or information

Easily generate purchase requisitions